

Importing Templates into Medical Director 2 & 3

For more information about
GPQ's Importing Templates into
Medical Director contact:

Kat Murray
Level 5
410 Queen Street (Cnr Wharf St)
GPO Box 2546 Brisbane 4001
T 07 3105 8300
F 07 3105 8301
kmurray@gpql.com.au
www.gpql.com.au
ABN 56 123 426 111

**A proud member of
the Australian General Practice
Network**

IMPORTANT: Do not open the template in Microsoft Word or any program other than Medical Director. If the template is opened in another program it will corrupt the links and it will have to be downloaded again.

Downloading templates from the GPQ website

1. Go to <http://www.gpql.com.au/eHealth/eReferrals/> then find the *eReferrals Templates* table.

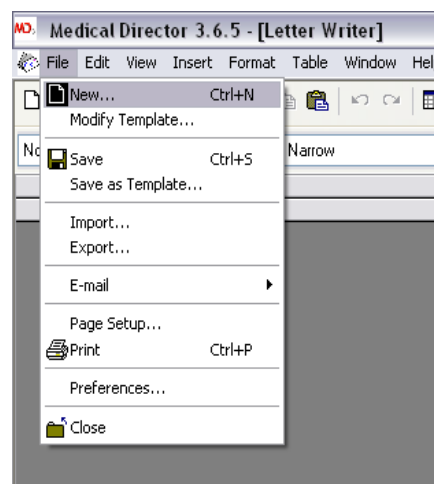
2. Right click on the desired template and click on 'Save As'.

Tip: Save the template on your desktop or in a 'Templates' folder

Importing the template

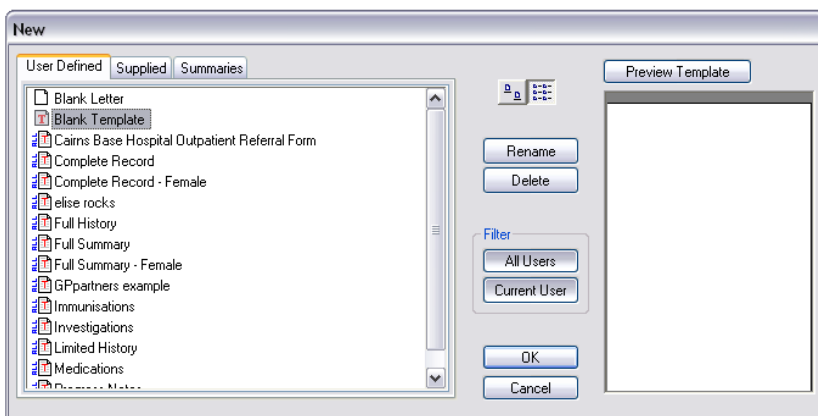
3. Open Medical Director

4. Click on the **Tools** menu and select '**Letter Writer**' (or press **F8**). Click on '**File**' and select '**New**'

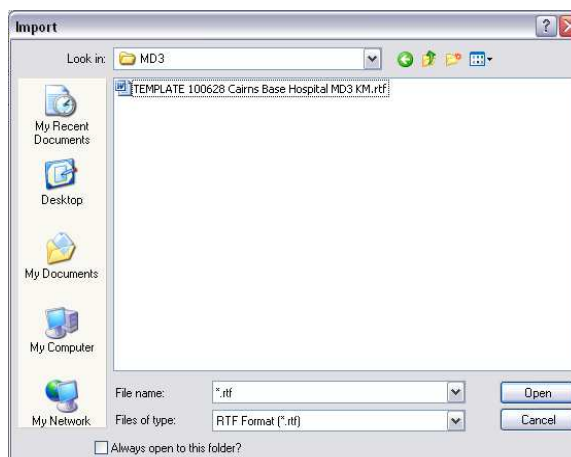
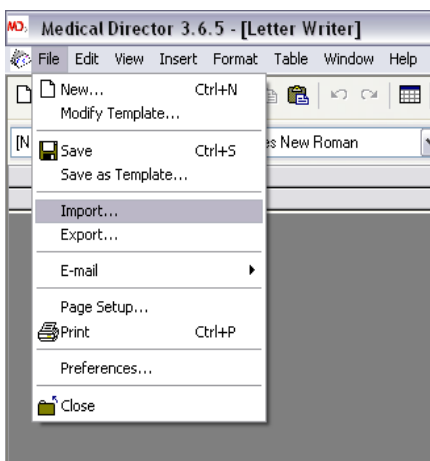


**Together
we can
build
a better
health
system**

6. Click on 'Blank Template' and OK

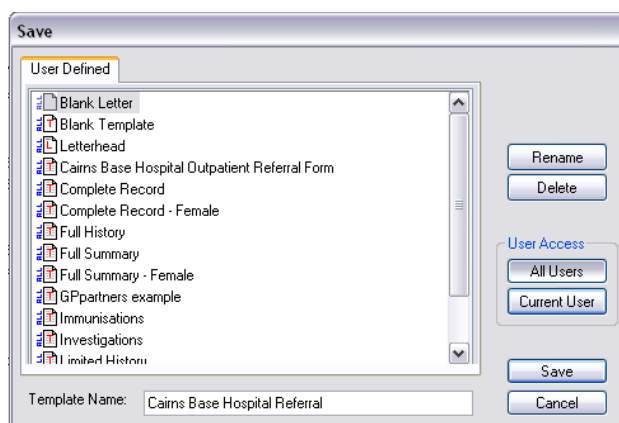
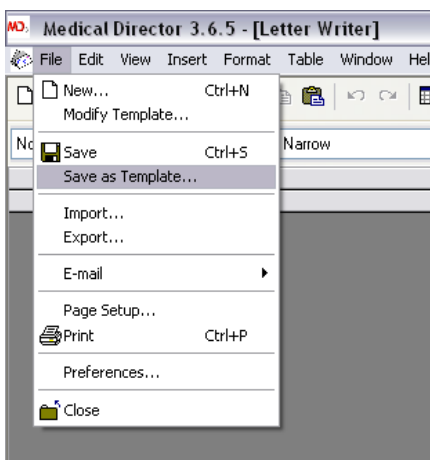


7. Click on 'File' and select 'Import'. Navigate to where the template was saved and click on 'Open'.



Together
we can
build
a better
health
system

8. Click on 'File' and select 'Save as Template'. Name the template and Save.



The template has now successfully been imported into Medical Director. To use the template simply open a patients file and press F8. Click on 'File' and select 'New'. Select the newly imported template and click on **OK**. Complete the fields in the pop up box and click **OK**.